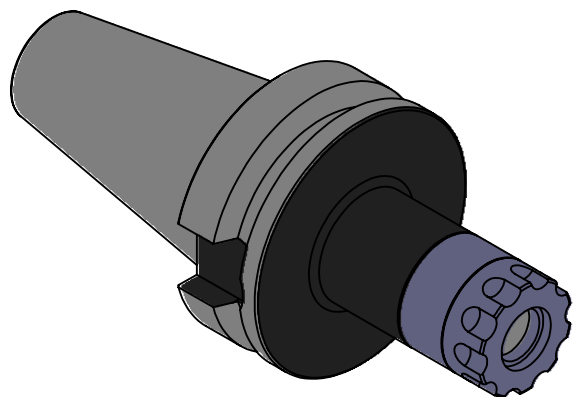
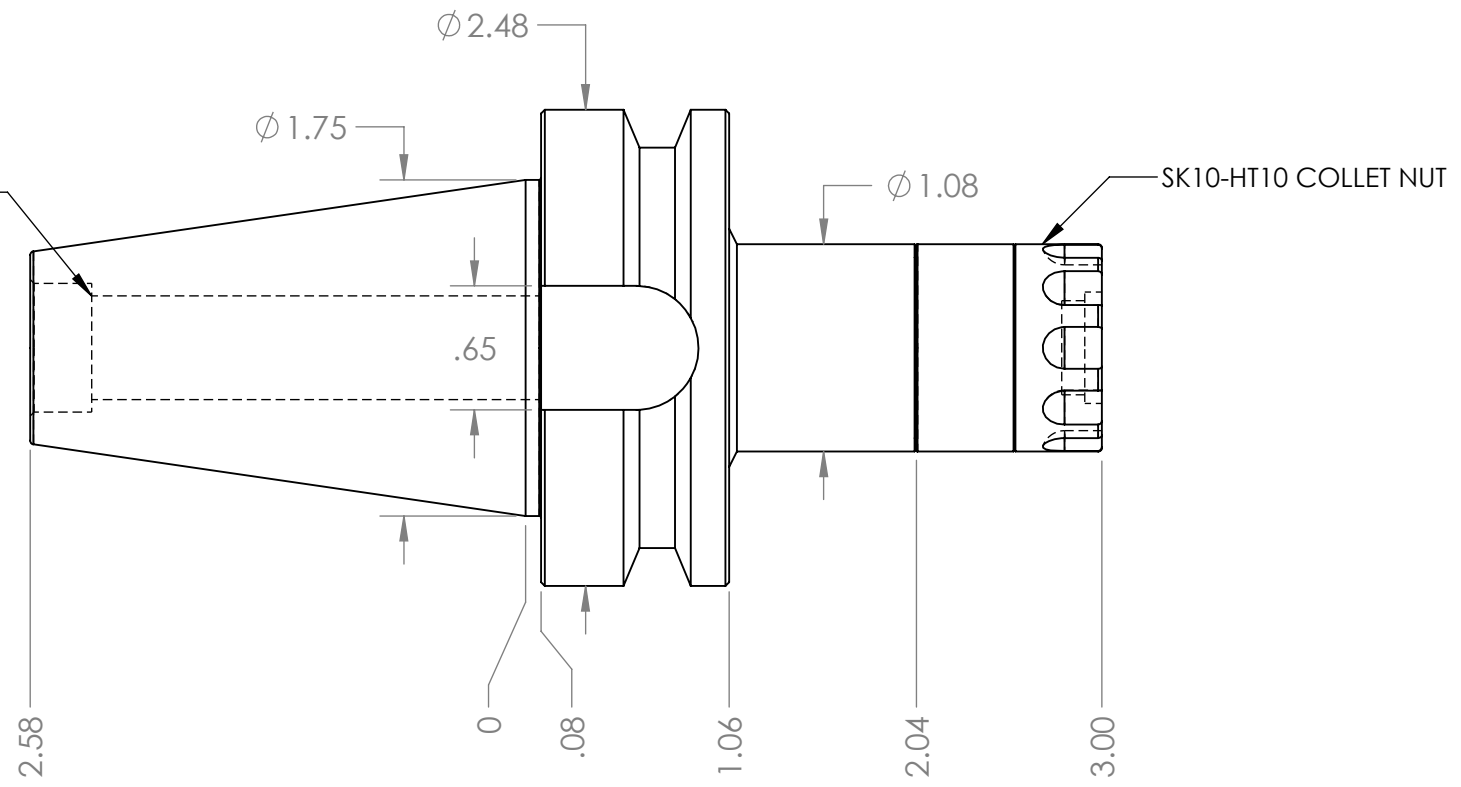


M16 x 2.0 THREAD x 1.25 DEEP
C'BORE DIA .670 x .320 DEEP



NOTES:
WORKS ON ALL BT40 MACHINES
TAKES ALL SK10 COLLETS FROM .078"-.393"
USES WRENCH PART # HT10-TWA TORQUE WRENCH (NOT INCLUDED)
FOR MORE PRODUCT DETAILS PLEASE GO TO MARITOO.COM
AND SEARCH ITEM # LISTED ON THIS PRINT

MARITOOOL

WWW.MARITOOOL.COM

ITEM# **BT40 SK10-3.0-HT**

Made in USA